

M/V "LEADER"



Type of Vessel:

RoRo – PCTC

Built:

1991

Max Speed:

18.5 Kn.

Loading Capacity:

abt. 385 cars

M/V “LEADER” – Technical Information

Ship's Name	: LEADER ex ARIAKE MARU NO. 8
Class / IMO No.	: RINA / 9004413
Registered Owners	: FILENTZIO SHIPPING COMPANY LIMITED - CYPRUS
Registration No.	: IMO 9004413
Signal Letters	: C4NP2
Tonnage Gross / Net / LDT	: 6090 / 2108 / 2705 mts
Deadweight	: 3695 mts
Freeboard Summer (mm)	: 214
Draught (m)	: 5.812
Shipbuilder	: KITANIHON SHIPBUILDING CO., LTD
Hull No.	: 257
Date of Launch/Build	: 02-1991 / 03-1991
Vessel is not ice classed.	
Position of Machinery Room	: AFT
No. of Decks	: 4
Framing	: LF AT BTM & DK
Equipment No.	: 918
Length Overall (m) / Breadth (m) / LBP (m)	: 108.500 / 20.00 / 100.00
freeboard (mm)	: 102.28
Moulded depth amidship to upper deck (m)	: 10.70
Length of Deck Erections (m)	: P 63.900
Capacity of Tanks (m3)	: FO 400 FW 319 WB 1,430
Bow Thruster output	: 400 Kw
* All information given, “about”, in good faith.	

M/V “LEADER” – Consumption Information

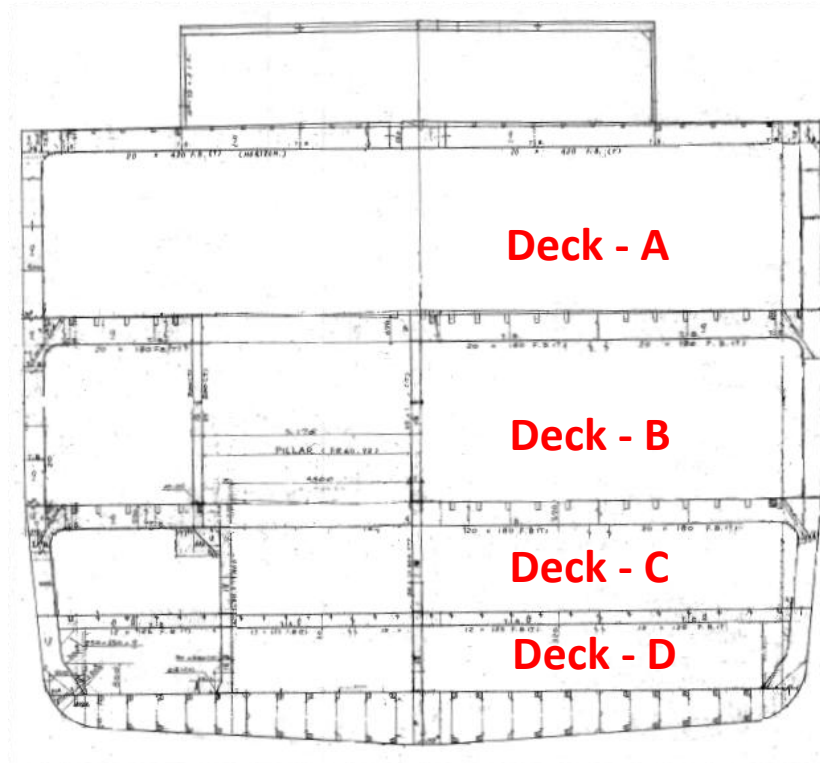
Speed	M/E port	M/E sea (IFO 180; mts per 24hrs.)	One Generator (MDO; mts per 24hrs.)	Two Generators (MDO; mts per 24hrs.)	Boiler (MDO; mts per 24hrs.)
12 Kn. - economic speed	N/A	16	1.3	2.9	0.9
14 Kn.	N/A	19.44	1.3	2.9	0.9
15 Kn.	N/A	19.44	1.3	2.9	0.9
16 Kn.	N/A	20.4	1.3	2.9	0.9
17 Kn.	N/A	20.88	1.3	2.9	0.9
17.5 Kn.	N/A	22.08	1.3	2.9	0.9
18 Kn. (About) - service speed	N/A	24	1.3	2.9	0.9
18.5 Kn.	N/A	25	1.3	2.9	0.9
19.5 Kn. Max speed (not recommended for more than 2 hrs.)	N/A	27	1.3	2.9	0.9

During navigation, vessel will run on one generator under normal weather conditions defined as upto and including BF3 DSS3. Two generators will be operated during: all manouevering modes; berthing/unberthing; entering and leaving port(s); and sailing under heavy weather conditions (defined as in excess of BF3 DSS3).

Total bunker capacity on board abt. 367 mts. (about 310 mts. of IFO and about 55 mts. of MGO).

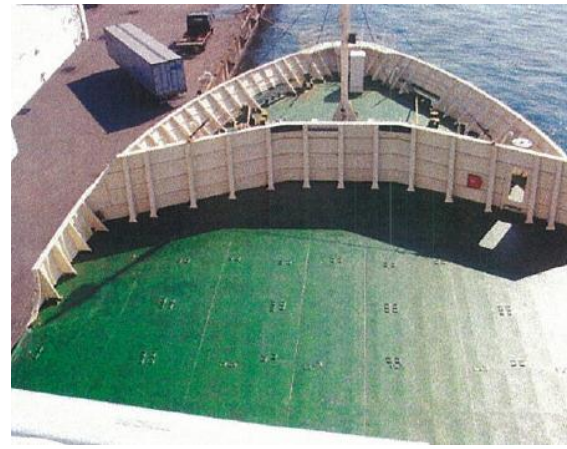
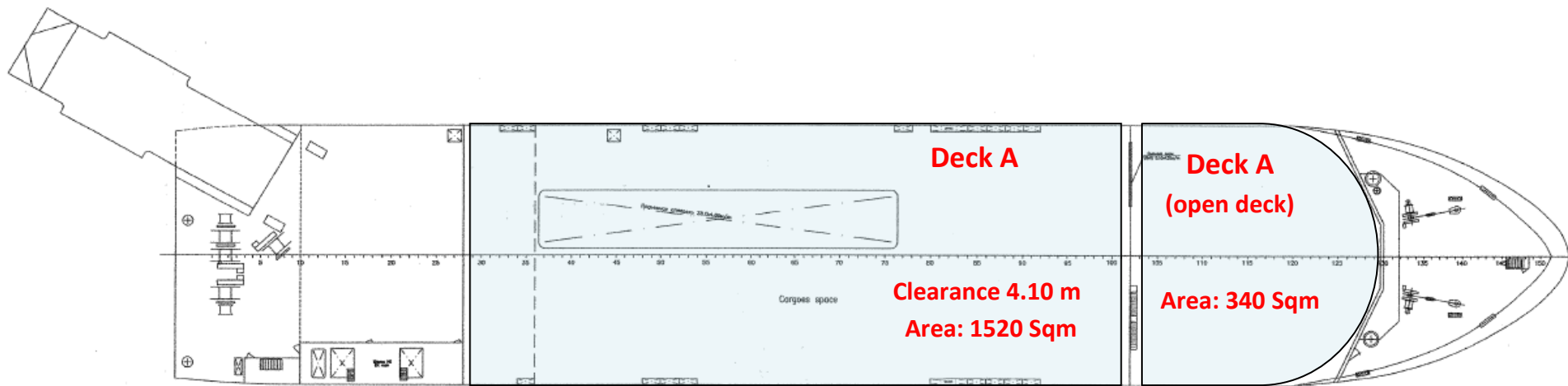
All information given, “about”, in good faith

M/V "LEADER" – Cargo Decks

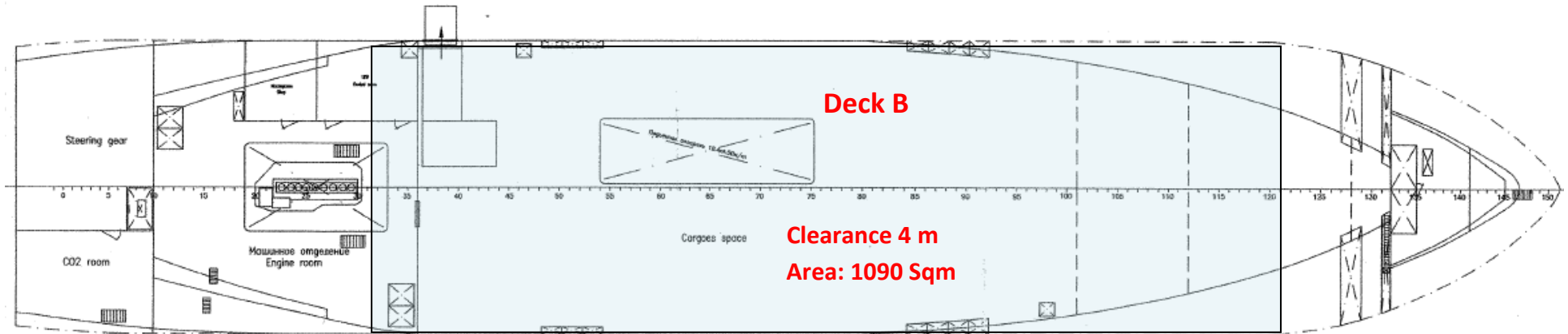


Deck	Clearance (m)	Wheel Load (T/m ²)	Uniform Load (T/m ²)	CEU	Trailers (loadable with 12 m chassis)
A	4.1	0.45	0.2	124 (+20 on open deck)	24
B	4	0.56	0.3	105	18
C	2.1	8.45	1.2	91	-
D	1.65	8.45	1.2	65	-
				385	42 (+156 CEUs)

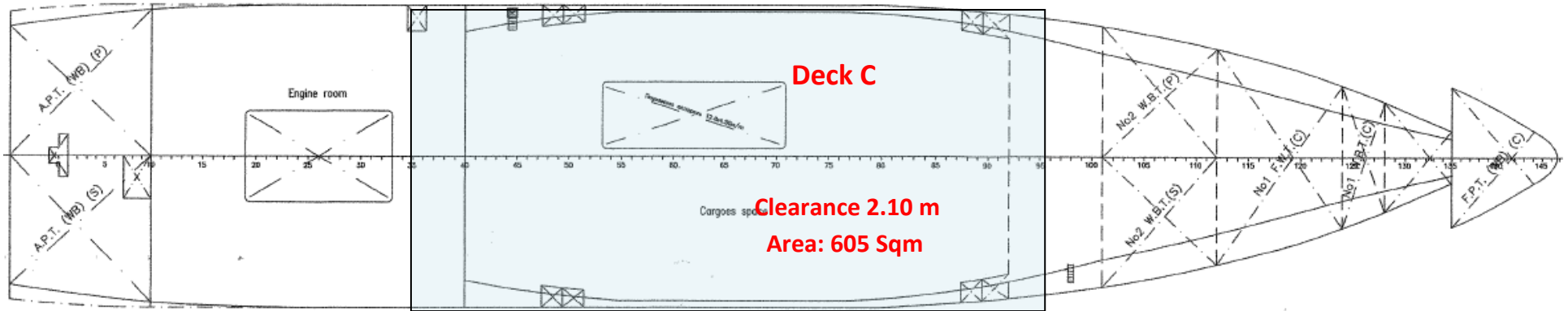
M/V "LEADER" – Deck A



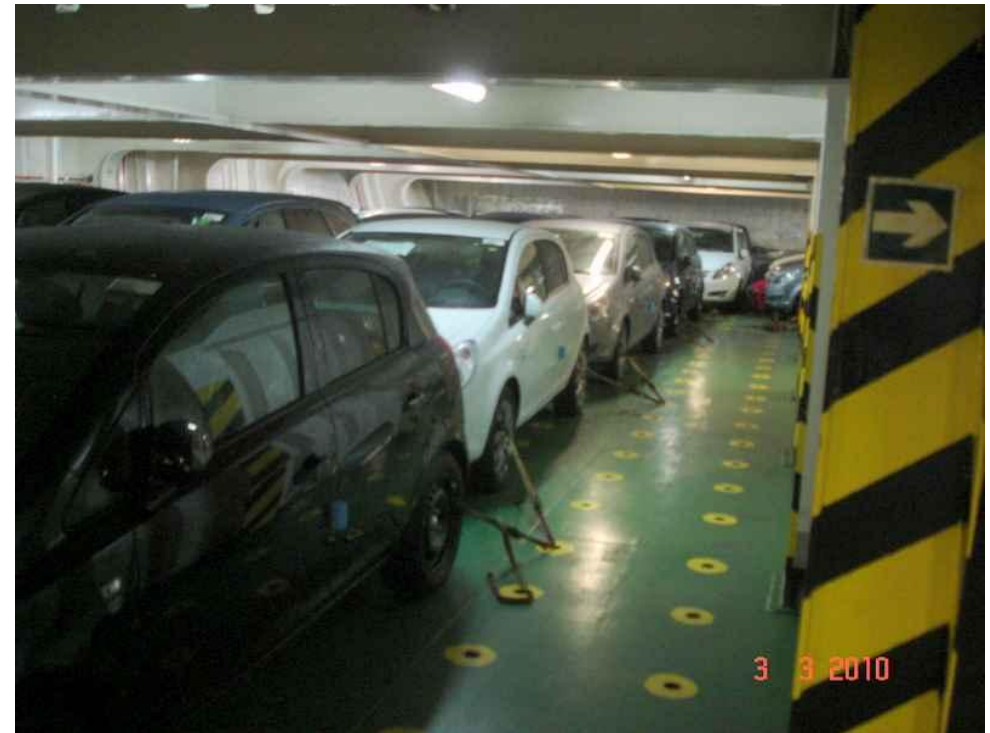
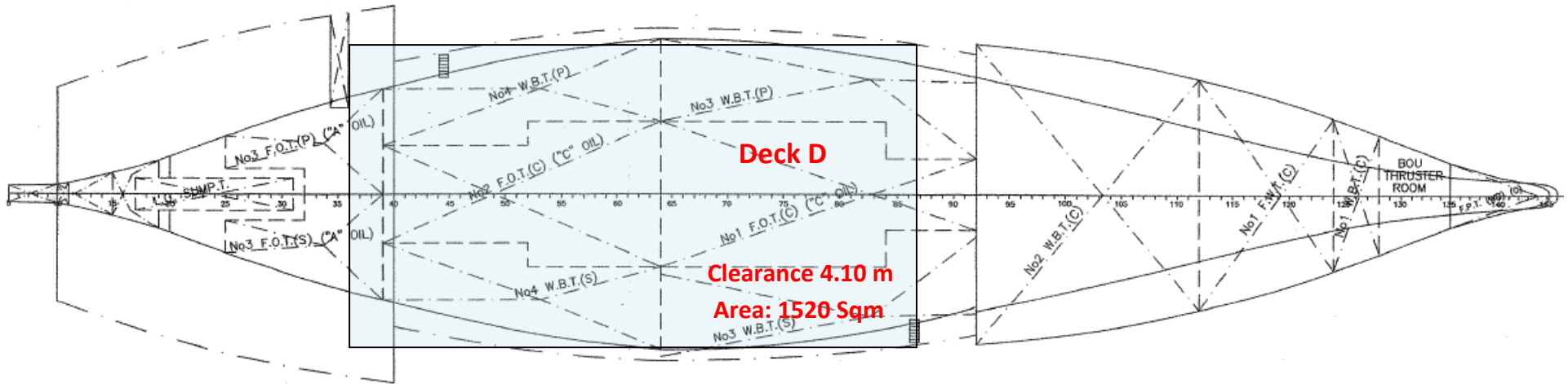
M/V "LEADER" – Deck B



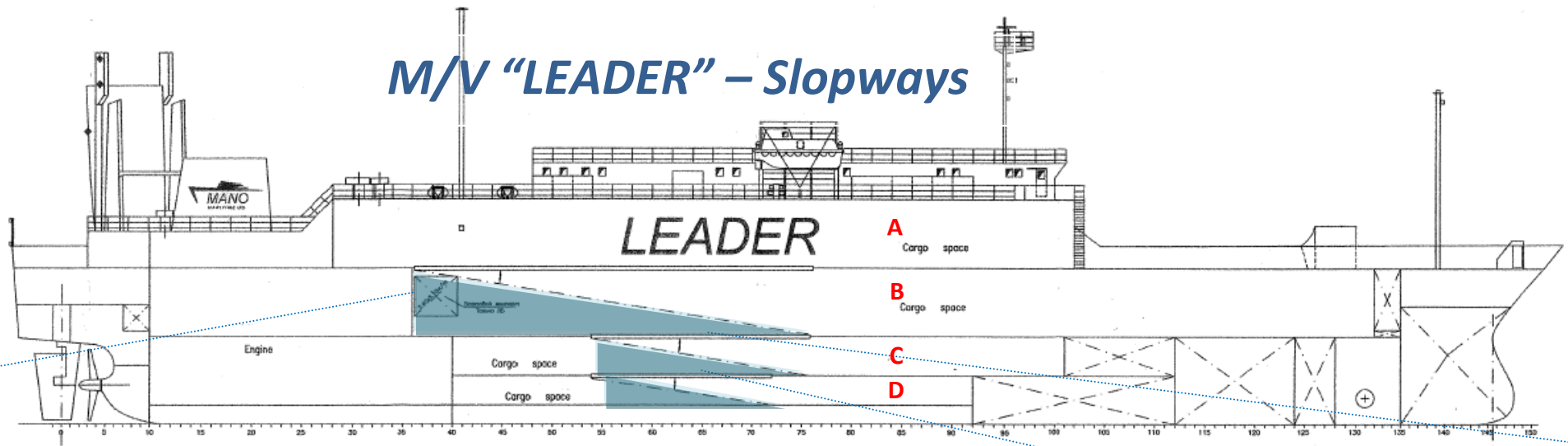
M/V "LEADER" – Deck C



M/V "LEADER" – Deck D



M/V "LEADER" – Slopways



Slopway from Deck "A" to Deck "B" (hoistble Ramp):
Length : 12.6m
Angle: 10°



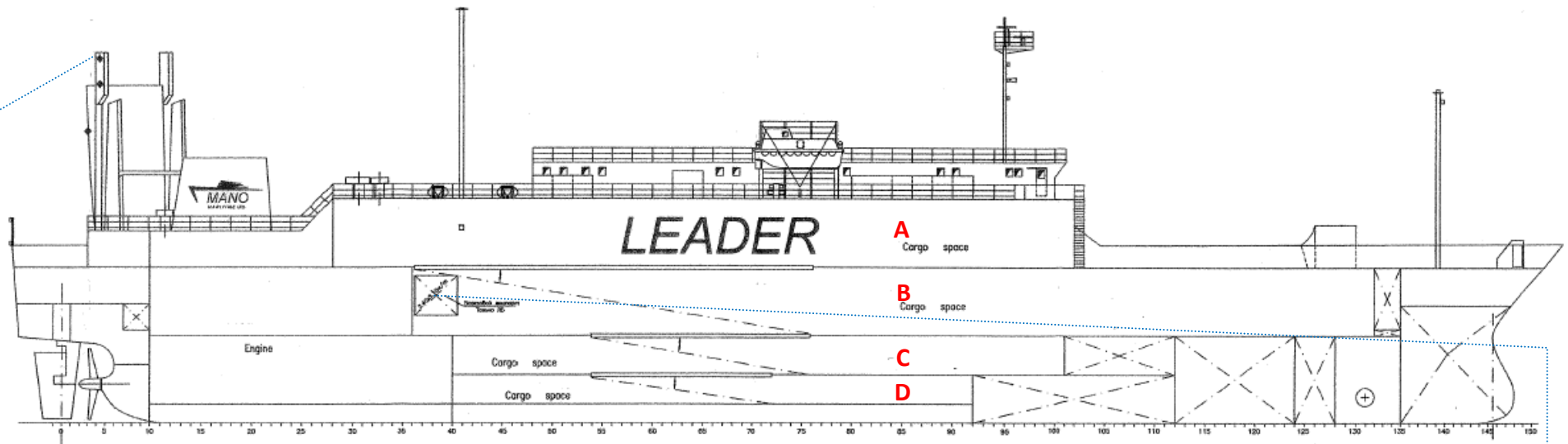
Slopway from Deck "B" to Deck "C":
Length : 15.4 m
Angle: 10°



Slopway from Deck "C" to Deck "D":
Length: 28 m
Angle: 10°



M/V "LEADER" – Ramps



Quarter Stern Ramp (Port Side):

Length: 21.65m
Breadth: 6.5m
SWL: 40MT
Clearance: 4.1m
Angle: 0-15°



Side Door (Port Side):

Clearance 2.15 m
Width 2.55 m
SWL is 2.5 mts

